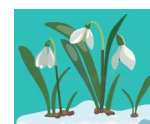




MAPLE VIEW NEWS



Kindness, Bravery, Independence

Headteacher statement:



Once again we have had a busy half term and one with plenty of smiles. We have seen the introduction of the new staff uniform, and you've probably guessed the colour - purple!

Celebrating all cultures is important to us at Maple View and celebrating the Chinese new year and been a highlight for me this half term. Dragon dancing, snake crafts, fortune cookies and a parade. This has all been captured on our Facebook, so don't forget to follow! Enjoy a safe and peaceful half term! Theresa Mills

Welcome back- ready to learn!

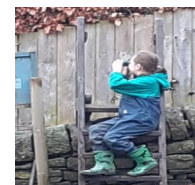


Children returned refreshed and ready to learn! Our new half-term text is 'Greta and the Giants'. We have been learning about environmental issues and the joy of working together to create a harmonious world!

Big Garden Bird Watch!



We have been learning about different birds and have been lucky enough to spot them in and out of school. Children have learnt how to use binoculars to spot our feathered friends!



Chinese Luna New Year! We love to be part of our wider-world community and we really enjoyed celebrating the Luna New Year. We had a themed music lesson, ribbon dancing and a dragon parade. Children learnt about the Luna new year animals with a special



assembly and completed linked learning. The children were rewarded for such enthusiastic



learning with a delicious cake at the end of the day!



School Council. School council have met this half-term to talk about their safe spaces. Children walked the site and identified on a map where their safe spaces were. This helps us to grow and be aware of how children think of their environment.



Connecting with the Community

Every week, some children have the opportunity to go to a local library. They will choose books and learn valuable skills such as ordering, waiting, queuing and social skills. Look how engaged they are!



Wonderful walking! Some of our children have been stretching their legs on cold, wet winter days!



We have been out to local parks and visiting the forest at our Sister school, Pegasus. Our children are motivated to exercise by taking in the sights and sounds around them and engaging in some exploration! Getting muddy and wet is just



part of the fun!

All about Animals!

Here at Maple View, we love learning how to look after animals, big or small! This half term children have spent time with Minnie, our school dog, learnt about habitat with our stick insect and even been down on the farm at our sister school, Bladon House, learning how a small farm works. Working with animals can help our children to connect, learn to care for others and in the process, themselves!



spotlight on:



Lucy! Lucy is our therapy assistant and she is an absolute asset to our team. She has really grown in her role over the last year and our children love working with her. Thank you!



Why be ordinary when you can be fabulous?